



Enjoy a fully customizable virtual training tool and recreate the environment of a painter for your training with SimSpray



WHY DOES SIMSPRAY IMPROVE YOUR TRAINING?

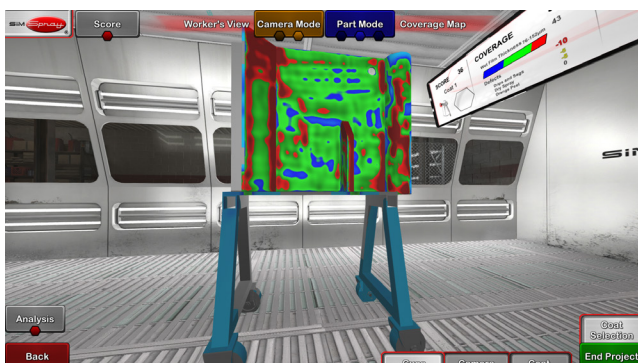
- Master the spray application process (speed, distance, angle)
- Reduce training costs up to 50%* (consumables and VOC)
*Study carried out at training centers using SimSpray
- Follow results and skill progression
- Motivate your trainees with a fun and safe approach
- Easily spot trainees errors
- Offer an individualized training program
- Enjoy a realistic experience by adjusting the air pressure and paint flow directly on the paint gun



Replay function



Defects - Drips



Check with the coverage map if you apply the right thickness of paint



Edge blending option for your autobody repair training

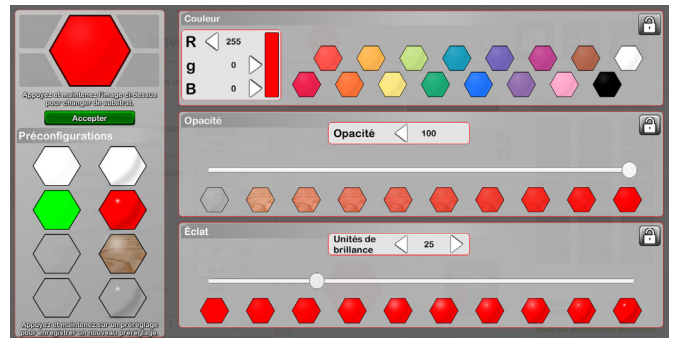
Take advantage of virtual reality to work on the repetition of the gesture

ADAPT SIMSPRAY TO YOUR CURRICULUM

PROGRAM YOUR REAL PAINT IN SIMSPRAY



Set up the viscosity



Reproduce your paint your the RGB Code

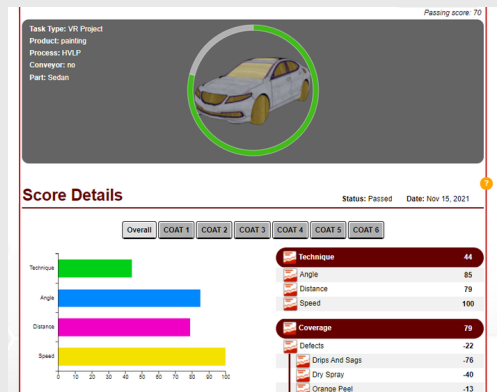
CHOOSE THE PARTS FOR YOUR PROGRAM



*Complete list available upon request
The full car is only available with the workstation

CUSTOMIZE YOUR COURSE

- ✓ Exercise results available in PDF
- ✓ Access your learners' notes
- ✓ Create individualized training paths



SIMSPRAY is available in English, Spanish, French, German, Polish, Russian and other languages upon requests

PROGRAMS AVAILABLE



Automotive

Aircraft

Building

Furniture & cabinetry

Industry

ASTM Certification

Non contractual pictures

Distributed by



Développé by



✉ sales@mimbus.com

📞 +33 5 61 70 71 71

🌐 www.mimbus.com