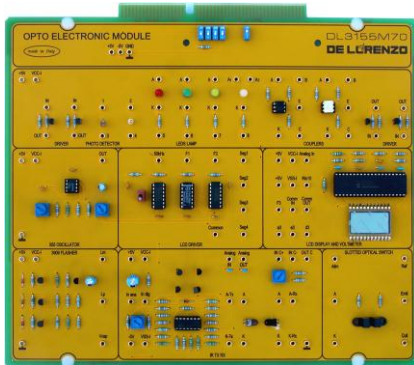




OPTO ELECTRONICS



DL 3155M70

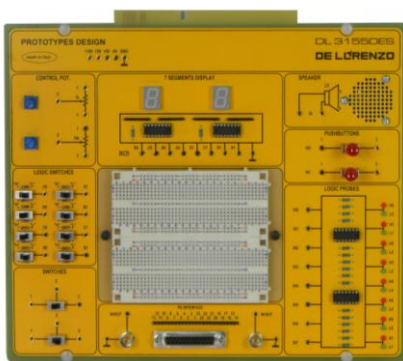
Theoretical topics:

- Concepts of physics on light and colours
- Light radiation
- The vision of colour
- Light bulb operation
- LEDs
- LEDs technical features
- Concepts of Liquid Crystal Display
- LCD types
- Light sensors
- Photodiodes
- Photoresistors
- Infrared radiation
- Opto-isolators
- Fault simulation

Circuit blocks:

- Photo detector
- LEDs
- Couplers
- Light drivers
- 555 Oscillator
- LCD driver
- LCD display and voltmeter
- 3909 Flasher
- Infrared Transmitter/Receiver
- Slotted optical switch

BOARD FOR ELECTRONIC DESIGN



DL 3155DES

It contains all of the necessary elements for the student to carry out the design and wiring of his own electronic circuits, both analogue and digital.

Technical features:

- Removable breadboard
- 2mm terminals to connect to the breadboard
- Cables with 2mm banana terminations for connection to the breadboard
- 8 red logic indicators for high levels and 8 green logic indicators for low levels
- 2 pushbuttons with normally open and normally closed outputs
- 1 Potentiometer - 1 kW
- 1 Potentiometer - 10 kW
- 2 slide switches with free terminals
- 2 BNC Connectors
- 8 logical switches
- 1 loudspeaker, 8 W
- 2 7-segments LCD displays with decoder
- Interface for PC