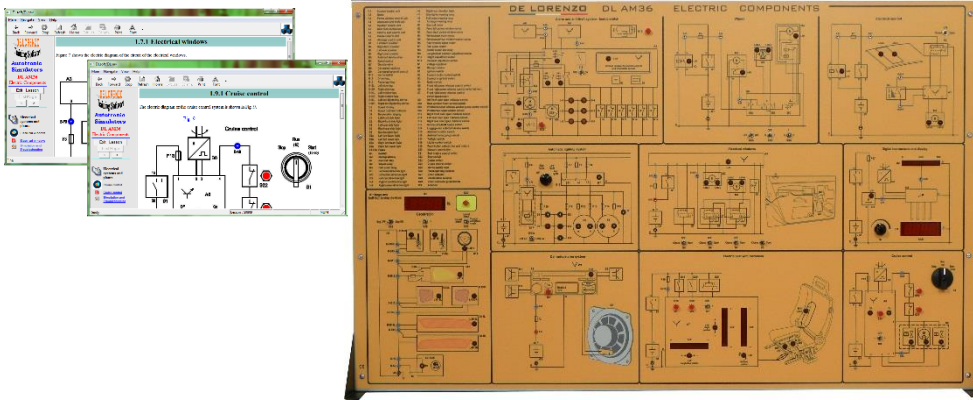




ELECTRIC COMPONENTS



DL AM36

LEARNING EXPERIENCE

This simulation panel has been specially designed and realized to allow a complete and easy learning of the techniques, the electric components and systems, the passive safety devices, used in the electrical plants of the vehicles.

MAIN CHARACTERISTICS

The system covers the following subjects:

- Digital instruments and display,
- Electrical sunroof,
- Cruise control,
- Safety belts tension relay,
- Radio/stereo system,
- Automatic lighting system,
- Electric seats regulation,
- Fuel shut-off inertial switch,
- Electric (power) windows,
- Alarm system,
- Multi-function valve in the fuel tank,
- Air-bag (driver-bag, passenger-bag, side-bag, window-bag),
- Wipers.

This vertical frame bench-top trainer is specially designed to show to students how automotive systems work. The simulator consists of a panel operated by the support of a computer with a coloured silk-screen diagram that clearly shows the structure of the system and allows the location of the components on it.

The display of the information available on the computer screen allows the continuous control of the educational system. The operational conditions can be entered by the students and the insertion of faults can be carried out through the computer by the teacher.

The trainer is supplied with a CAI Software and the supported documentation guides the students to the study and the performance of the simulation exercises. All components installed and given leads are made to protect the safety of the students.

GENERAL CHARACTERISTICS

- Dim. mm approx (HxLxW) : 700x1000x150 - (470 with the base)
- Weight approx. kg 25
- Input power supply: AC 220V±10% 50 Hz
- Working temperature: -40°C ~ +50°C.