



MULTI APPLICATIONS PLC TRAINER



DL TOUCHAPP

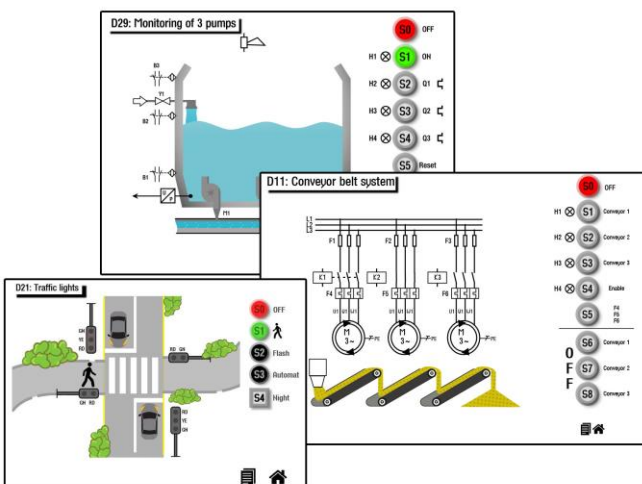
The **MULTI APPLICATIONS PLC TRAINER** has been designed for a wide variety of didactic applications both for the academic and industrial field. It is an industrial process simulator for technical training with a virtual learning environment that offers a complete software package for discrete and continuous automation processes in various fields of industry. It offers a robust hardware architecture with rugged and safe enclosure for demanding training applications. It's a perfect trainer to learn the use of PLC (PLC not included).

The **MULTI APPLICATIONS PLC TRAINER** allows to perform a lot of 3D animated experiments which depicts an extensive range of installations with different degrees of difficulty.

Complete with connecting cables and experiment manual.

Experiments:

- ◆ Logic basic functions
- ◆ Digital function modules
- ◆ Motor on/off
- ◆ Reversing contactor
- ◆ Star-delta connection
- ◆ Reversing star-delta connection 1
- ◆ Reversing star-delta connection 2
- ◆ Dahlander circuit
- ◆ Motor with 2 separate windings
- ◆ Wound-rotor motor
- ◆ Conveyor belt system
- ◆ Heating control
- ◆ Running light
- ◆ Automatic filling system
- ◆ Tank system
- ◆ Fan control
- ◆ Traffic lights for road works
- ◆ Traffic lights
- ◆ Goods lift
- ◆ Pump control
- ◆ Monitoring of 3 pumps
- ◆ Drinks machine





Technical data:

- 16 Digital Input Channels: isolated, 0-24VDC
- 16 Digital Output Channels: isolated, open collector, 0-24VDC
- 8 Analog Input Channels: 12 bit-resolution, 0-10V
- 8 Analog Output Channels: 12-bit resolution, single-ended, 0-10V
- 4 mm safety sockets for DI/DO, AI/AO and internal 24V DC power supply
- 2 x USB, 1 x Ethernet, 1 x HDMI, 1 x VGA ports
- 15.6" WXGA TFT Fanless Multi-Touch Panel Computer with
 - CPU: LGA1150 socket 4th generation Intel® Core™ i3 – 4330TE 2.4 G processor
 - System memory: w/DDR3L 4 GB
 - Storage: 2.5" SATA 128 GB
 - Resolution: 1366 x 768
- Power Supply 24 V DC, 3A
- Size (W x H x D): 512 x 297 x 100 mm.
- License for Windows Embedded Standard 7

Accessories needed: **DL 2210AS – PLC S7-1200 TRAINING PANEL**

